

# CERTIFICATE OF LOCATION OF GOVERNMENT CORNER

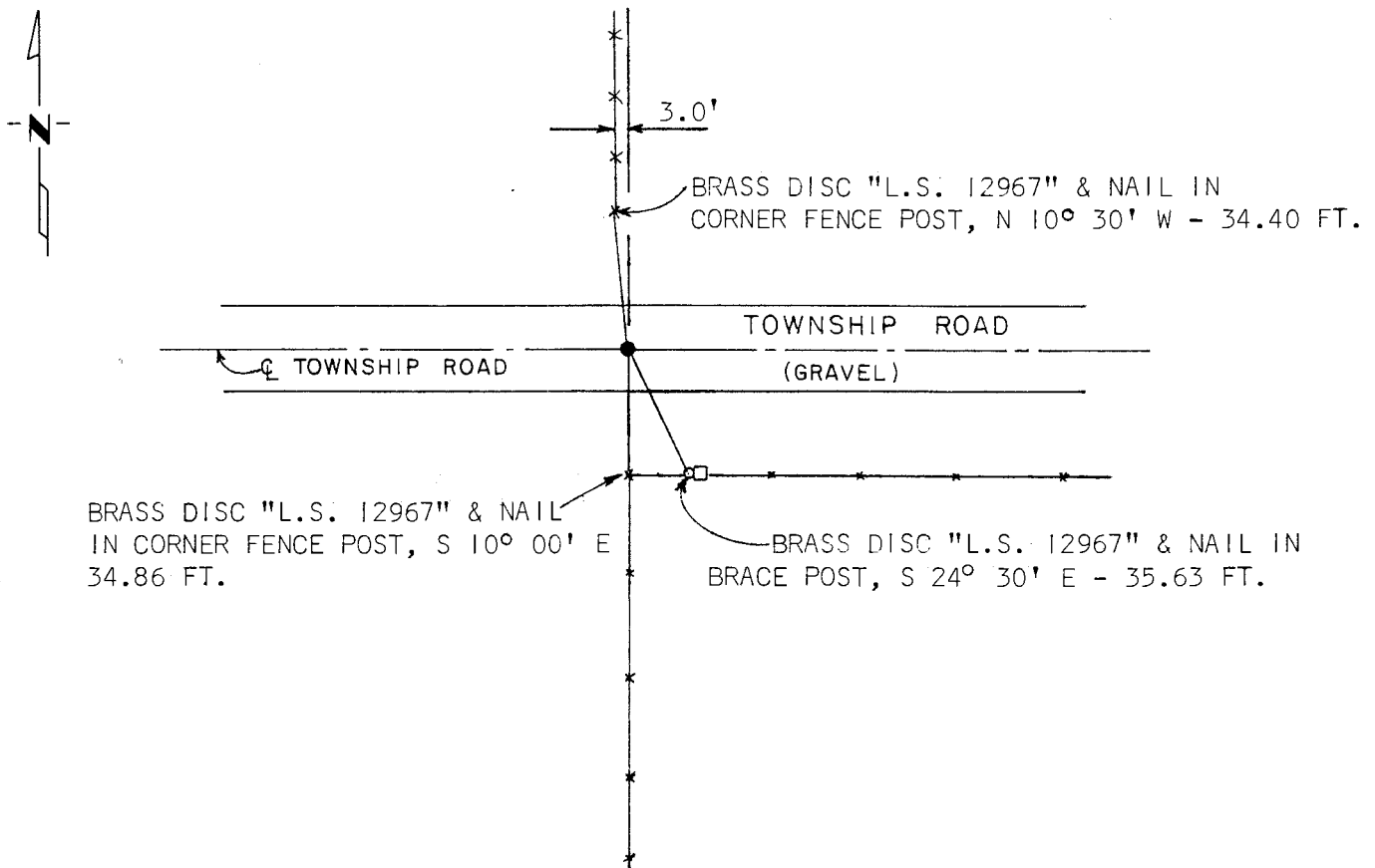
NORTH QUARTER Corner of Section 8, Township 108 N., Range 40 W., 5th P.M.

STATE OF MINNESOTA, County of MURRAY

At the corner location shown on the sketch:

- On 9 - 22 - 80 found a 1 1/4" iron pipe 2.0' below gravel road surface  
DATE
- left monument as found,  lowered monument,  removed monument (explain)
- On 9 - 22 - 80 placed a 1/2" iron reinforcing bar with "L.S. 12967" cap over  
DATE said pipe

### SKETCH OF REFERENCE TIES



I hereby certify that this document and the data contained herein was prepared by me or under my direct supervision.

Way S. Stat  
SIGNATURE DATE 12/28/81

Registration No. 12967

- Land Surveyor,  Professional Engineer
- County Surveyor,  County Engineer

### OFFICE OF THE COUNTY RECORDER

County of MURRAY

I hereby certify that this document was filed in the Co. Recorders office at 10 A.M. on the 18th day of February A.D., 1982

County Recorder Willard W. Ohme

By \_\_\_\_\_, Deputy

DOCUMENT NO. \_\_\_\_\_